

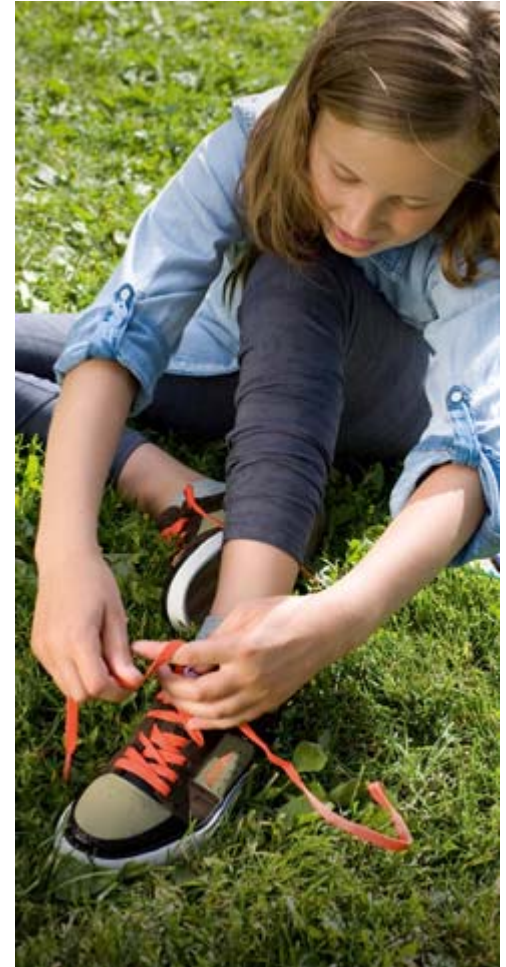


Sanoma - **Sustainable growth and profitability**

February 2011

Contents

- Sanoma Sustainable growth and profitability
- Appendix 1: FY10 result
- Appendix 2: Four divisions operating in different fields of media
- Appendix 3: About owners and coverage



Sanoma in brief

- One of the leading media companies in Europe, with a focus on sustainable growth and profitability
- Balanced portfolio of B2C and B2B products and services
- Market leader in chosen businesses and markets
- Organic growth through innovation
- Restructuring business operations according to changing customer needs
- Strong cash generator
- Good dividend payer



Balanced portfolio

Net sales EUR 2,761 million • EBIT EUR 245 million* • Personnel 15,405**



Magazines
Online business
TV and radio
Casual gaming



Newspapers
Online business



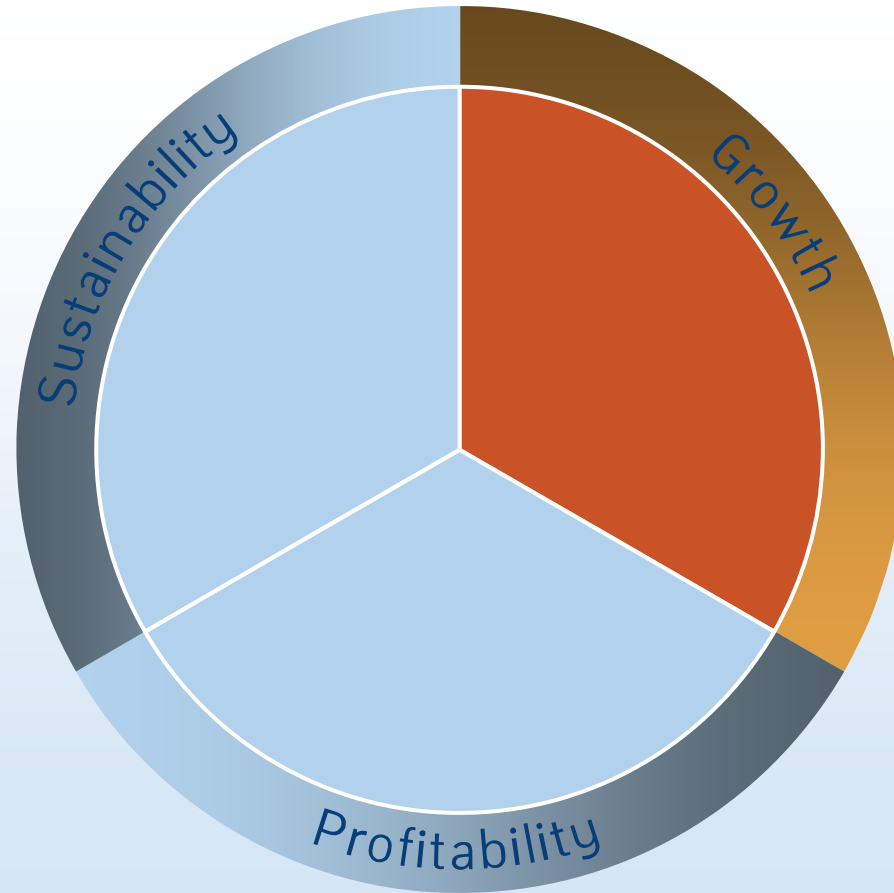
Learning
Language services
Literature & other



Kiosks
Trade services
Bookstores
Movie operations

Sustainable growth and profitability

Growth through innovation



Engaging consumers wherever they are

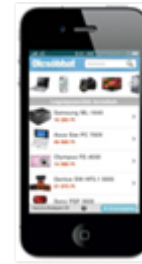
Sanoma Media combines magazines, TV and online



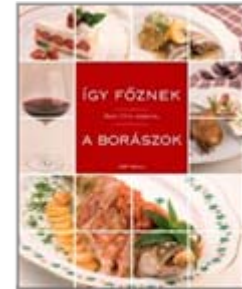
Magazines



Vertical Portals



Mobile Apps



(e-) books



Audiovisual content



Events



Tablet Apps

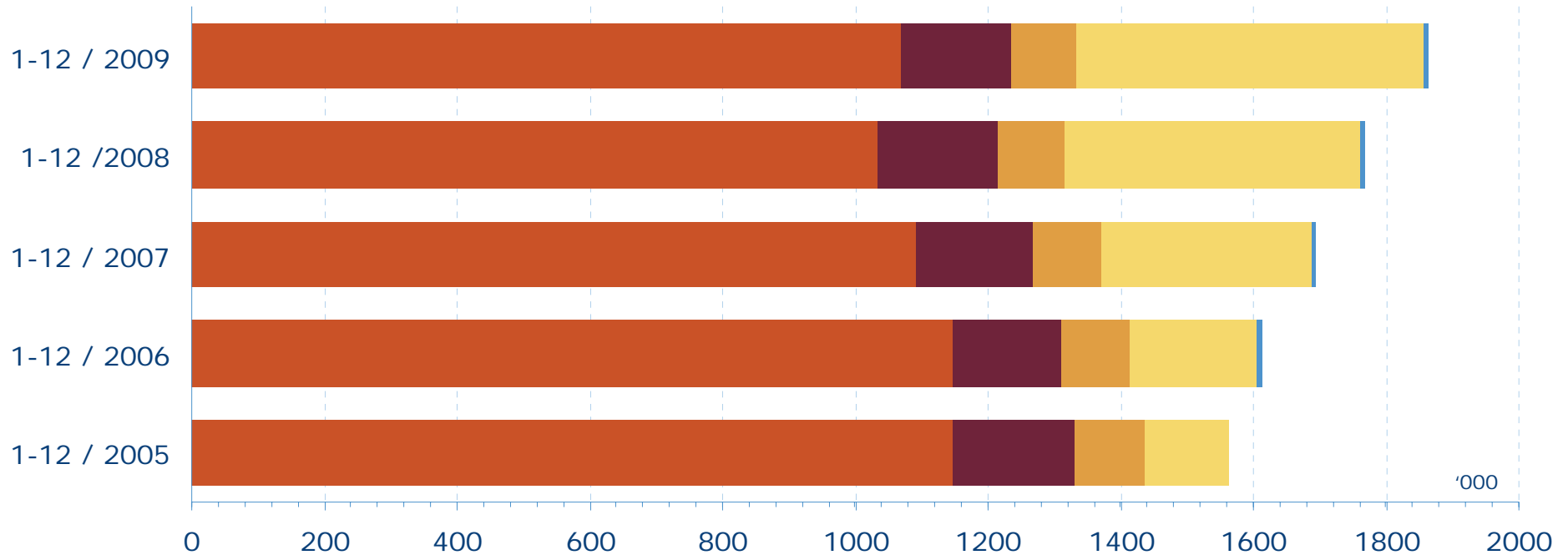


Augmented Reality

First row: Nők Lapja cookbook, NLCafé.hu portal, Olcóbbat iPhone app, Goedele and LINDA. Magazine, StyleToday layar app,
Second row: De XII Werken van Van Oudenhoven, Truckstar Festival, AutoWeek iPad app, Energiqueonline.be and bluewings magazine,

Print is still going strong

Newspapers reaching more people than ever



Helsingin Sanomat, daily newspaper (1 issue)



Weekly supplement (1 issue)



Monthly supplement (1 issue)

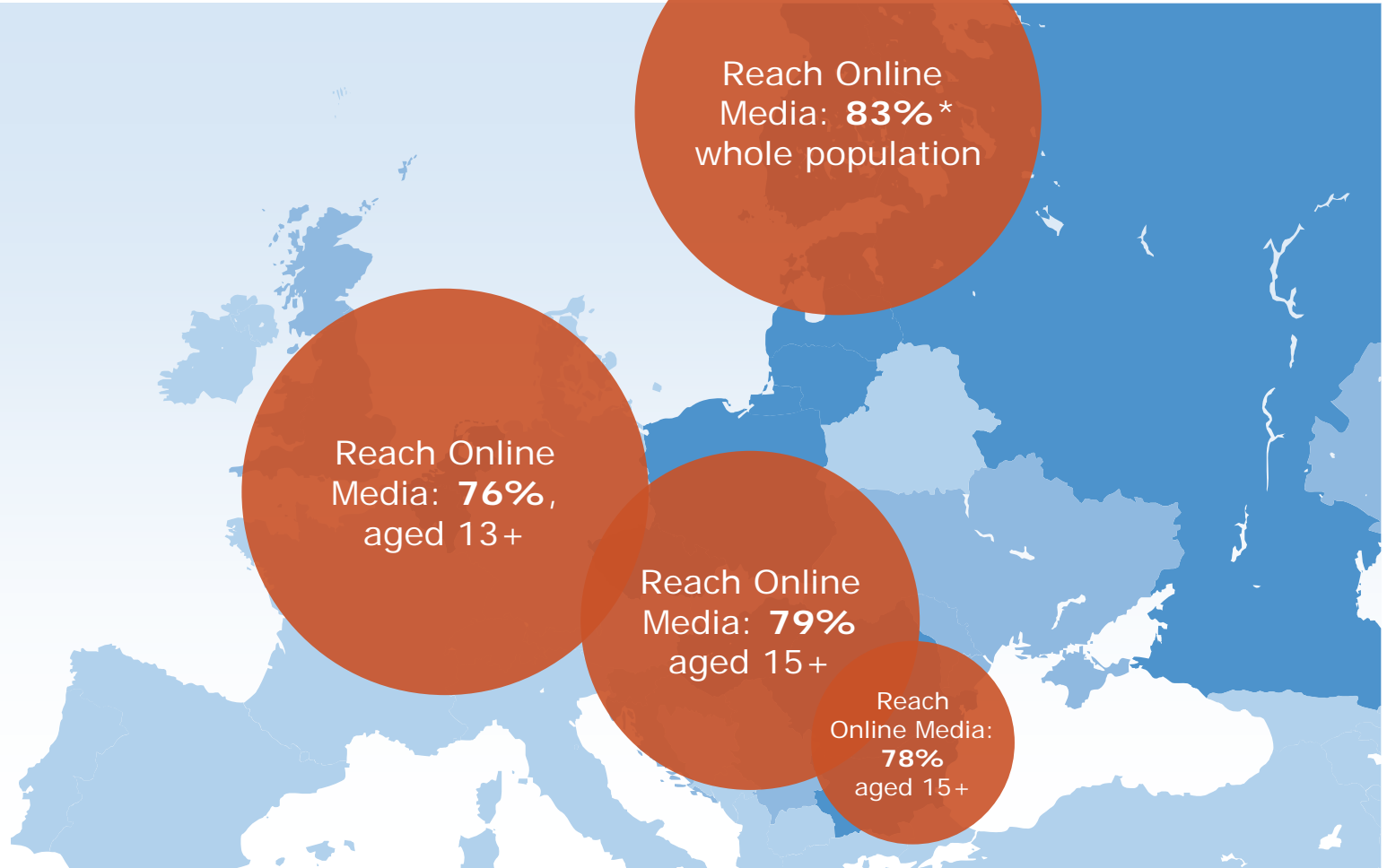


HS.fi (1 week)



Radio Helsinki (1 week)

Sanoma Media - leveraging digital media know-how internationally



Monetising leading traffic generators

Target to reach annual revenues of EUR 240 million by 2012



Traffic generators

Link directories



News



Social media



Focus areas

Transactional comparison & classifieds



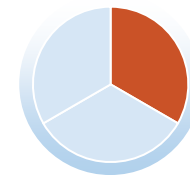
Verticals



Casual gaming



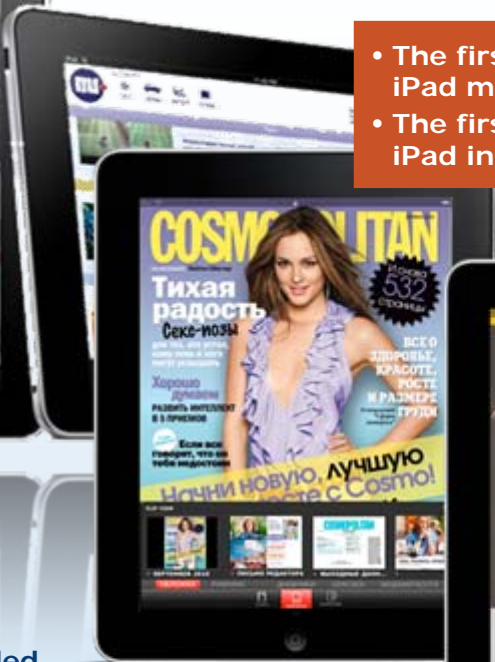
Tablets will change the way we perceive media



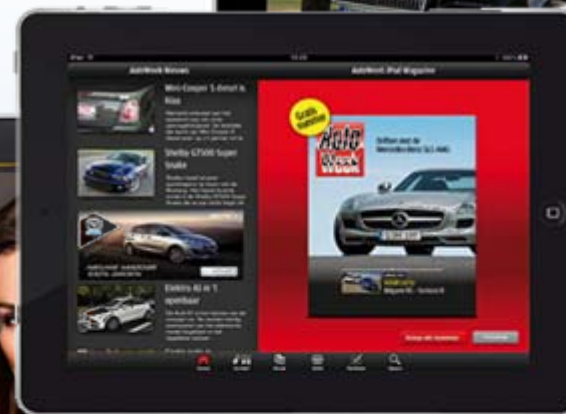
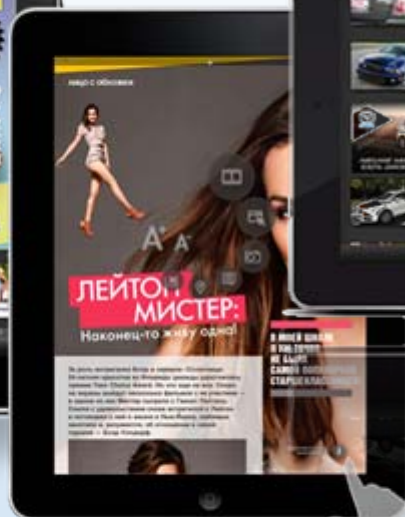
- The first Sanoma iPad magazine
- The first Cosmo on iPad in the world



NU.nl: advertising-funded



COSMO Russia: free app, in-app purchase single issue: \$2.99



AutoWeek NL: free app, in-app purchase single issue: €2.99

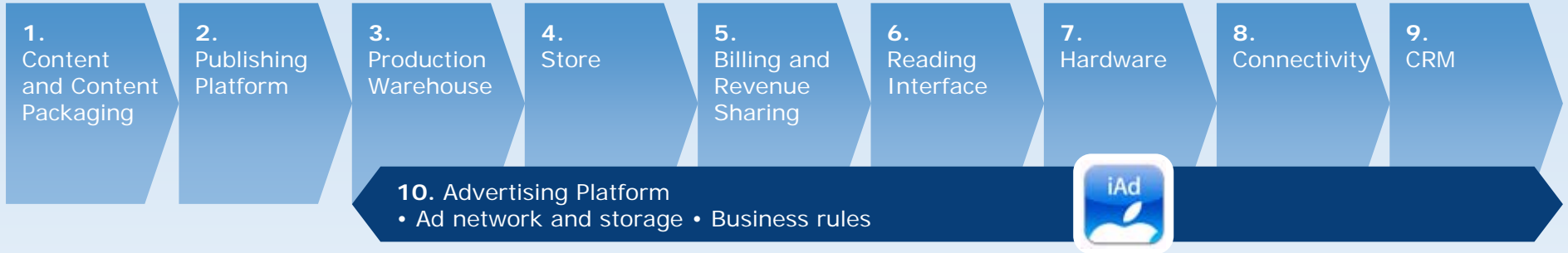


And we are ready

- 50+ Sanoma apps launched as of today...
 - ... on all key platforms: iOS (iPhone + dedicated iPad apps), Android, Symbian, ...
 - ... available in app stores worldwide...
 - ... catering to consumers in local languages...
 - ... and carefully selected to match with consumer habits and preferences
- Extremely successful launches:
 - >500,000 downloads of Nu app alone
 - Many apps immediately at no. 1 position in App Store
- A lot of other apps already in our pipeline today...

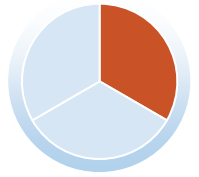


The emerging value chain offers lots of opportunities for us



Logos displayed include: admob, Samsung Apps, bada, Windows 7, SYMBIAN, Fx, Twitter, Facebook, Google, Apple, Adobe, NOKIA, PayPal, DINA, amazon.com, Microsoft, SAMSUNG, iAd, HS.fi, beta, vine, ovi, ADOBE AIR, Qt, ANDROID, MeeGo, and others.

In learning, we want to be among the top 3 players in Europe

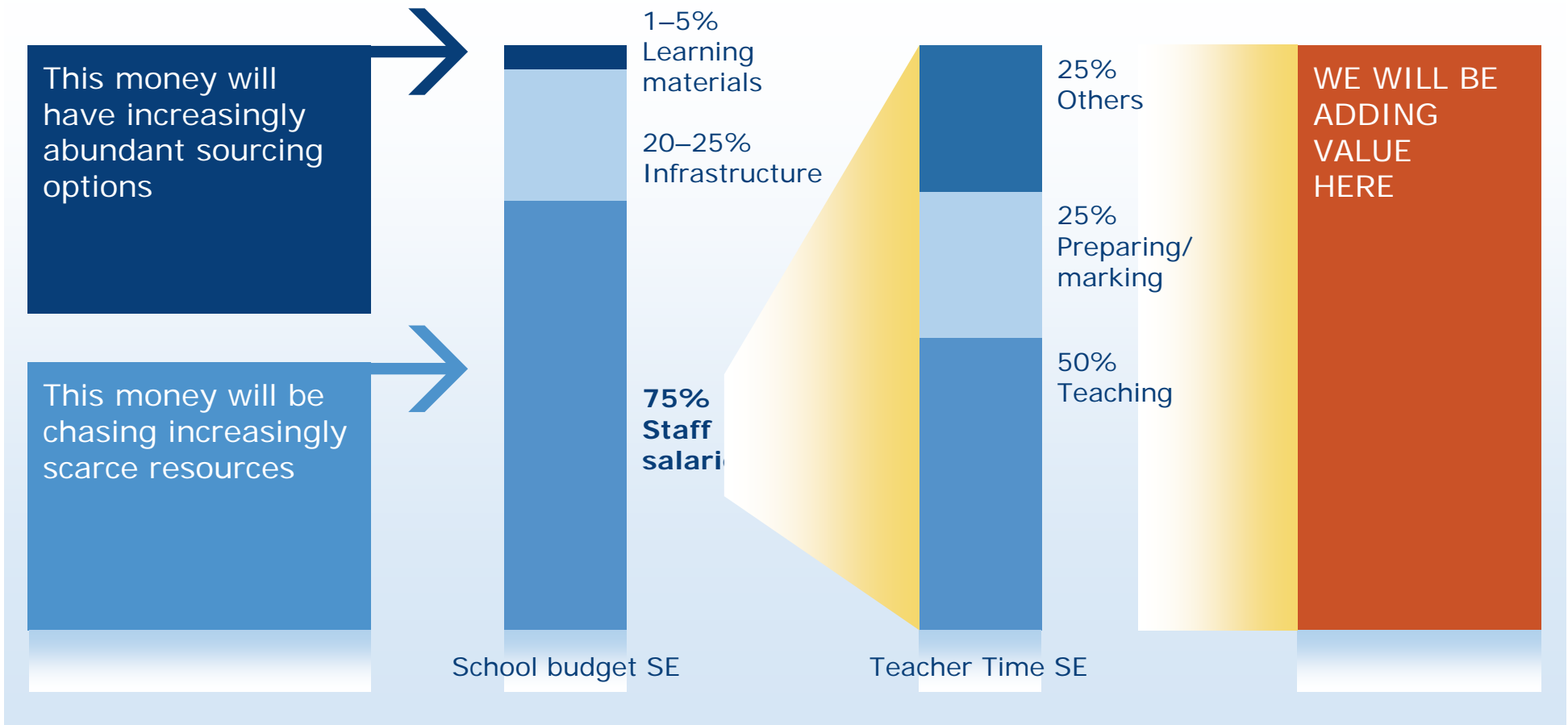


Growth drivers

- Market share gains through curricula changes
- Selected acquisitions
- Synergies through common e-Learning platforms and modularisation of content
- Expanding the traditional definition of educational publishing to teacher workflow management

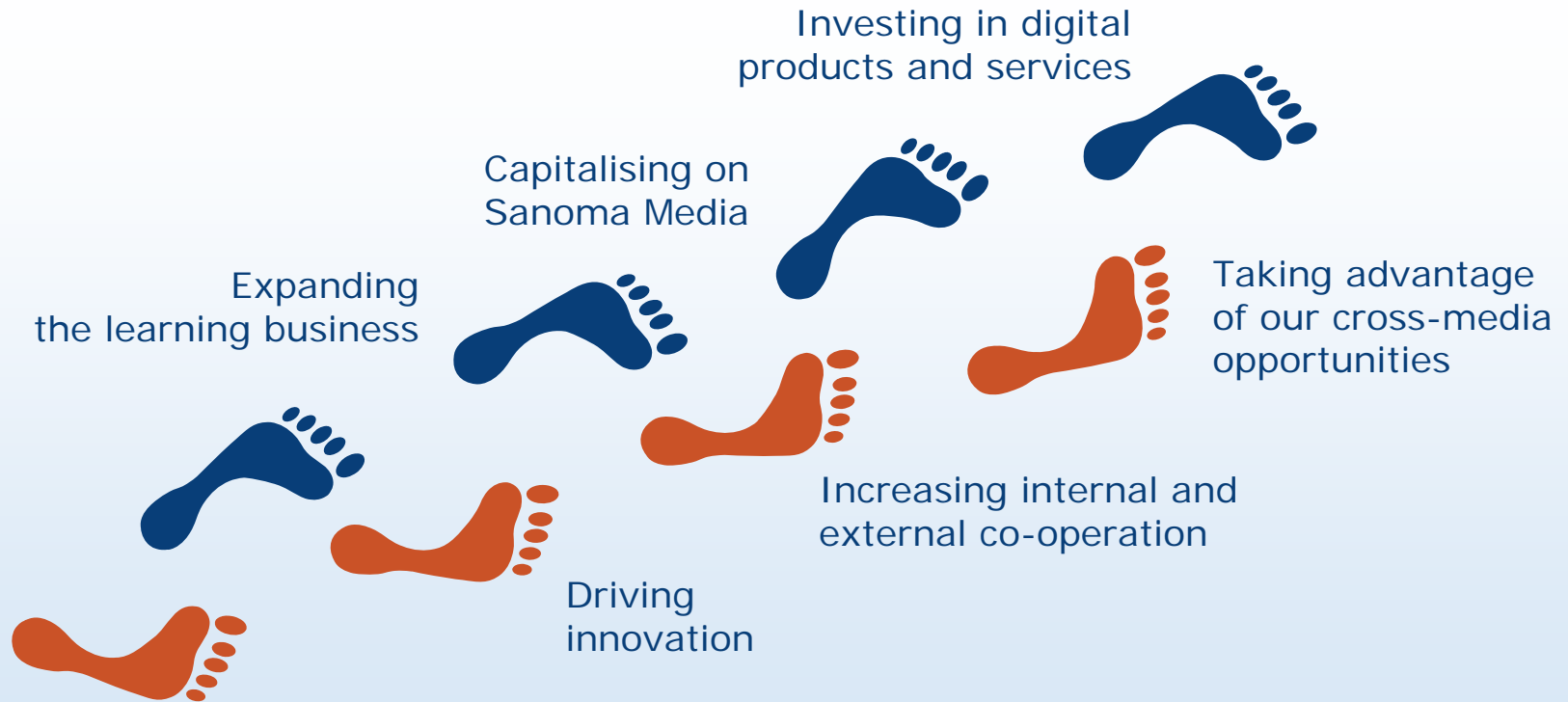


Helping teachers to manage their workflow

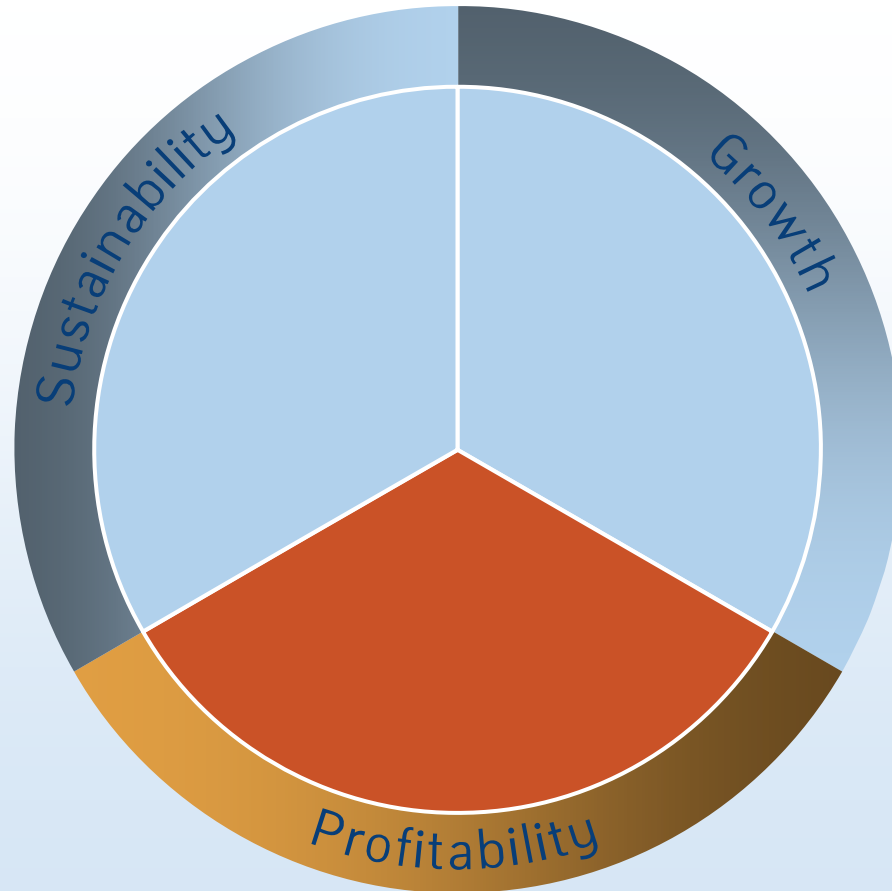


Steps in executing our strategy in 2011

Focusing operations and accelerating organic growth



Target to reach 12% EBIT margin



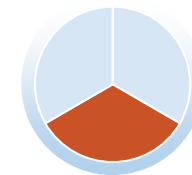


How to reach the 12% EBIT margin?

EBIT % excl. non-recurring items	2006	2007	2008	2009	2010
Sanoma Magazines	10.9	11.3	11.1	10.2	11.6
Sanoma Entertainment	9.5	10.8	11.0	13.2	12.1
Sanoma News	13.3	14.1	12.1	9.5	10.8
Sanoma Learning & Literature	15.5	13.8	13.6	12.6	15.0
Sanoma Trade	6.8	6.0	5.2	3.3	2.4
The Group	10.5	10.4	9.8	8.3	8.9

- Restructure our operations
- Develop our organisation further and exploit synergies across the Group
- Growth of online operations
- Growth of learning business

Strong full-year 2010



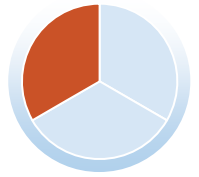
EUR million	10–12/ 2010	10–12/ 2009	Ch %	1–12/ 2010	1–12/ 2009	Ch %
Net sales	717.3	733.6	-2.2	2,761.2	2,767.9	-0.2
EBIT excluding non-recurring items	34.5	49.3	-29.9	245.4	229.5	6.9
% net sales	4.8	6.7		8.9	8.3	
EBIT	27.4	32.3	-15.3	392.7*	195.4	101.0
Earnings/share, EUR	-0.01	0.04	-113.7	1.85	0.66	182.3
Cash flow from operations/share, EUR	0.62	0.76	-18.8	1.69	1.50	12.6
Number of employees (FTE)**	15,405	16,723	-7.9			

* Includes the non-recurring capital gain of EUR 179.0 million from the sale of Welho
 ** At the end of the period

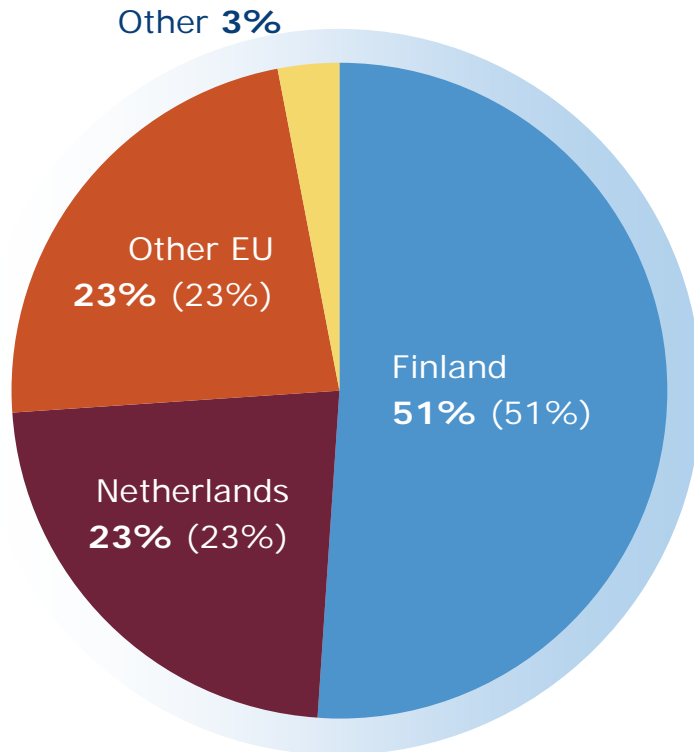
We deliver what we promise



Balanced geographically and by business

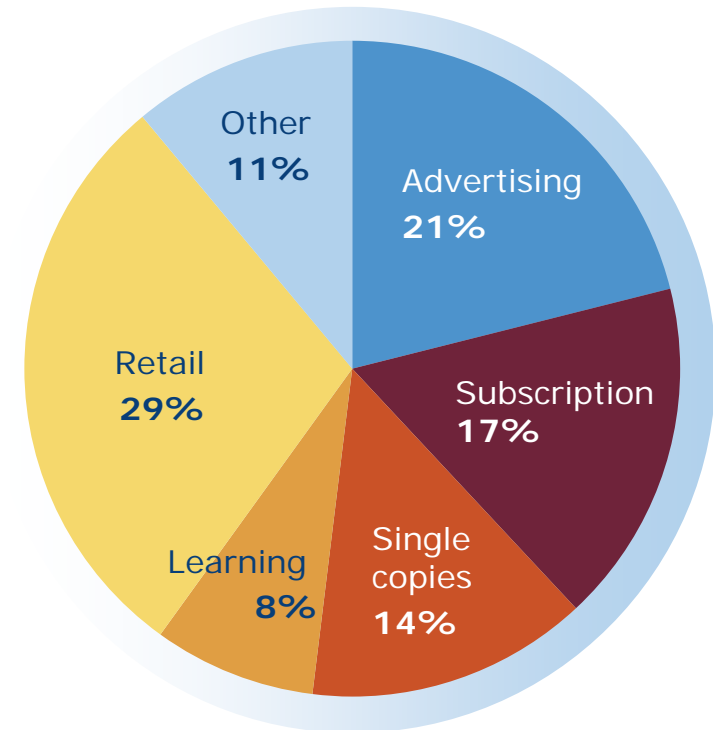


Net sales by geographic area



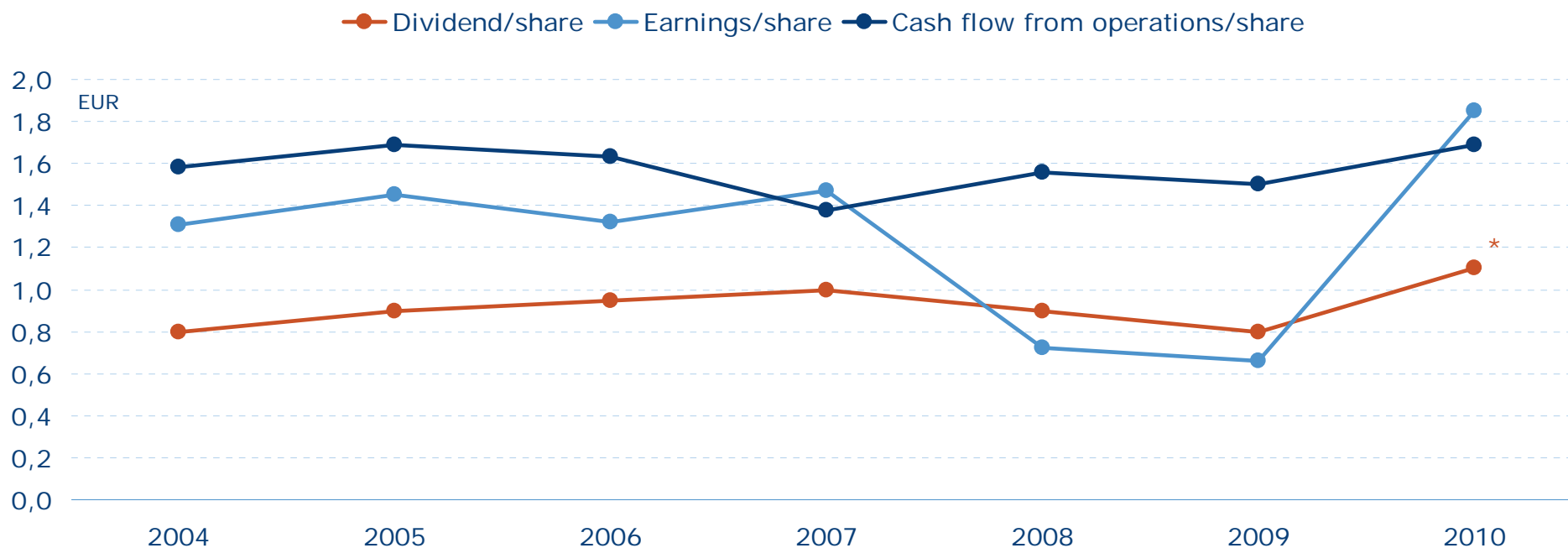
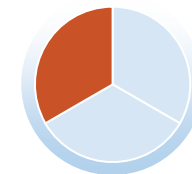
The Baltic countries 5% (5%)
Other CEE countries + Russia and Ukraine 12% (12%)

Net Sales by type of revenue source



Dividend yield of 6.8% in 2010

Over half of Group result for the period distributed in dividends



- Cash flow from operations very stable over the years
- Dividend payout impacted by both earnings/share and cash flow from operations/share

* Board's proposal

Investment highlights

- One of the leading media companies in Europe, with a focus on sustainable growth and profitability
- Balanced portfolio of B2C and B2B products and services
- Market leader in chosen businesses and markets
- Organic growth through innovation
- Restructuring business operations according to changing customer needs
- Strong cash generator
- Good dividend payer



Appendix 1

FY10 result

Strong base, focus on new business opportunities (1/2)

Fourth quarter

- Net sales adjusted for changes +1.0%
- Operating profit excl. non-recurring items decreased to EUR 34.5 million (EUR 49.3 million in 2009)
 - low performance of Trade, divestment of operations, increased marketing activities
- Stable growth in advertising markets continued
 - TV, online and job advertising leading the way (+24%, +33% and +42% in December in Finland)
- Expenses under control
 - total expenses: -1%
 - personnel expenses: -5%
 - advertising and marketing: +23%
 - paper costs: -16%



Strong base, focus on new business opportunities (2/2)

2010

- Stable net sales, good EBIT improvement
- Media markets started to recover in Western Europe and Russia
- Decrease of circulation was successfully compensated with the introduction of new products and services
- Strong emphasis on the development of online products and services as well as tablet apps
- Excellent development of cash flow from operations; EUR 273.8 million (EUR 241.8 million)
- Earnings per share EUR 1.85 (EUR 0.66)
- Proposal for dividend EUR 1.10 per share



How do we see the world right now? (1/2)

Western markets on a growth path, but with a slow start

Finland

- Consumer confidence had revived from the slump in December and is on a high level
- Unemployment rate still estimated to decrease
- Strong advertising market growth (+13% in December)
 - newspapers +8%, TV +24%, online +33%, jobs +42%
- Most of Sanoma's businesses gaining market share
 - investments in Q4 to secure good performance also in the future
- Opening Hours Act still affects customer volumes and the sales mix of kiosk products

The Netherlands

- Consumer confidence decreased in December
- Unemployment rate estimated to decrease
- Advertising markets growing (+8% Jan–Nov, gross figures)
 - slight growth in consumer magazines
 - Sanoma clearly outperforming the market development

How do we see the world right now? (2/2)

Russian economy recovering, rest of the CEE struggling

Russia

- Economy reviving, mainly thanks to increasing oil price
- Strong advertising market growth
 - still some way to go to the year 2008 level

Central Eastern Europe

- Economic fundamentals weak
- Government measures to reduce budget deficits
 - tax increases, reduction of investments and salaries and
 - very low consumer confidence
- The beginning of recovery takes time

Capitalising on the creation of Sanoma Media



Magazines
Online business
TV and radio
Casual gaming



Newspapers
Online business



Learning
Language services
Literature & other



Kiosks
Trade services
Bookstores
Movie operations

Outlook for 2011

- Net sales and operating profit excluding non-recurring items are expected to **be at the previous year's level**
 - in 2010, operating profit excluding non-recurring items was EUR 245.4 million
- This outlook is impacted by the several divestments made in 2010. The operating profit excluding non-recurring items accumulated from the divested businesses in 2010 amounted to some EUR 10 million. The most significant divestments were those of Welho and Humo.
- The outlook is based on the assumption that the advertising markets in the Group's main operating countries **grow somewhat**.



Financials

Strong full-year 2010

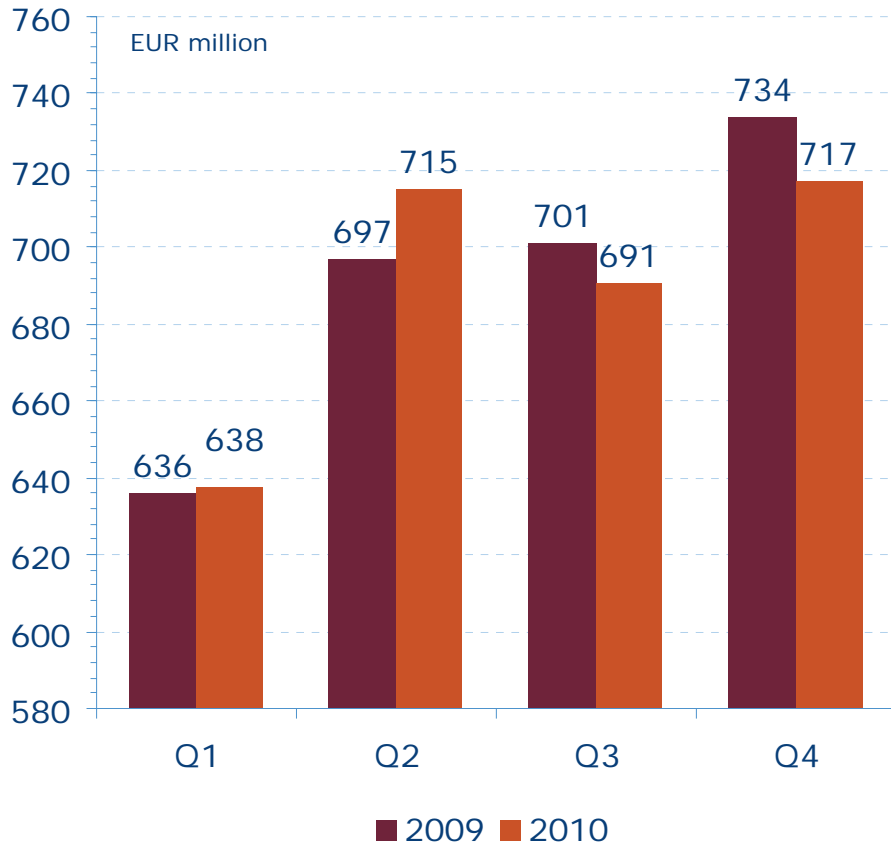
EUR million	10–12/ 2010	10–12/ 2009	Ch %	1–12/ 2010	1–12/ 2009	Ch %
Net sales	717.3	733.6	-2.2	2,761.2	2,767.9	-0.2
EBIT excluding non-recurring items	34.5	49.3	-29.9	245.4	229.5	6.9
% net sales	4.8	6.7		8.9	8.3	
EBIT	27.4	32.3	-15.3	392.7*	195.4	101.0
Earnings/share, EUR	-0.01	0.04	-113.7	1.85	0.66	182.3
Cash flow from operations/share, EUR	0.62	0.76	-18.8	1.69	1.50	12.6
Number of employees (FTE)**	15,405	16,723	-7.9			

* Includes the non-recurring capital gain of EUR 179.0 million from the sale of Welho
 ** At the end of the period

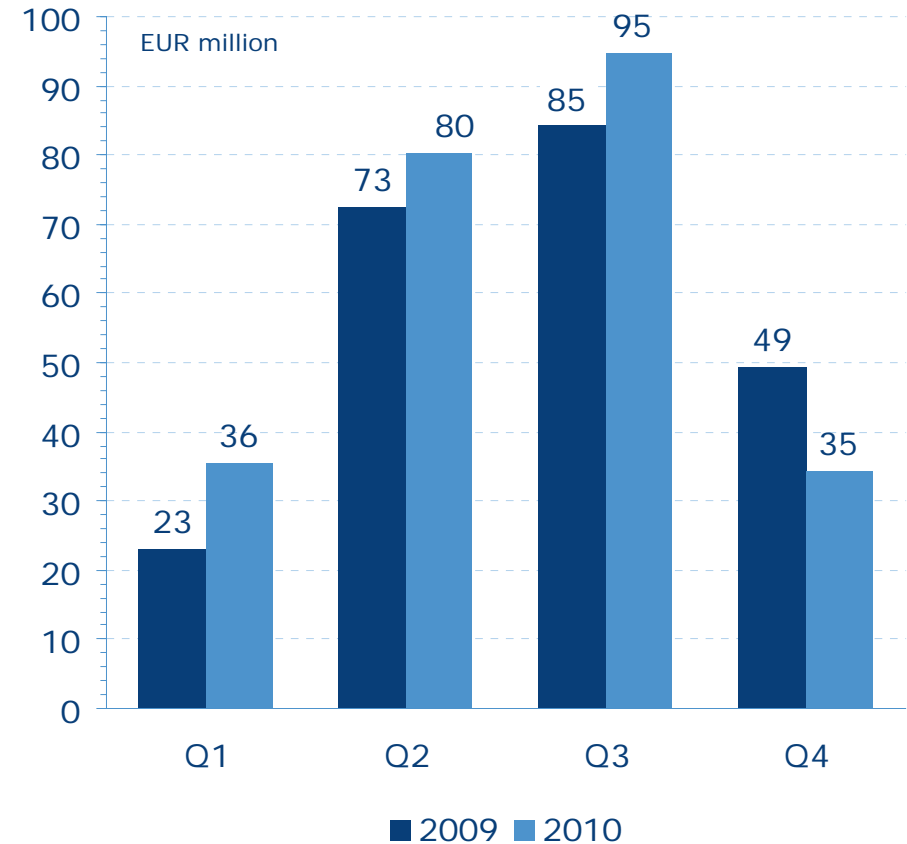
Divestment of operations and increased marketing expenses burdened results in Q4

Net sales adjusted for changes in the Group structure grew by 1%

Net sales



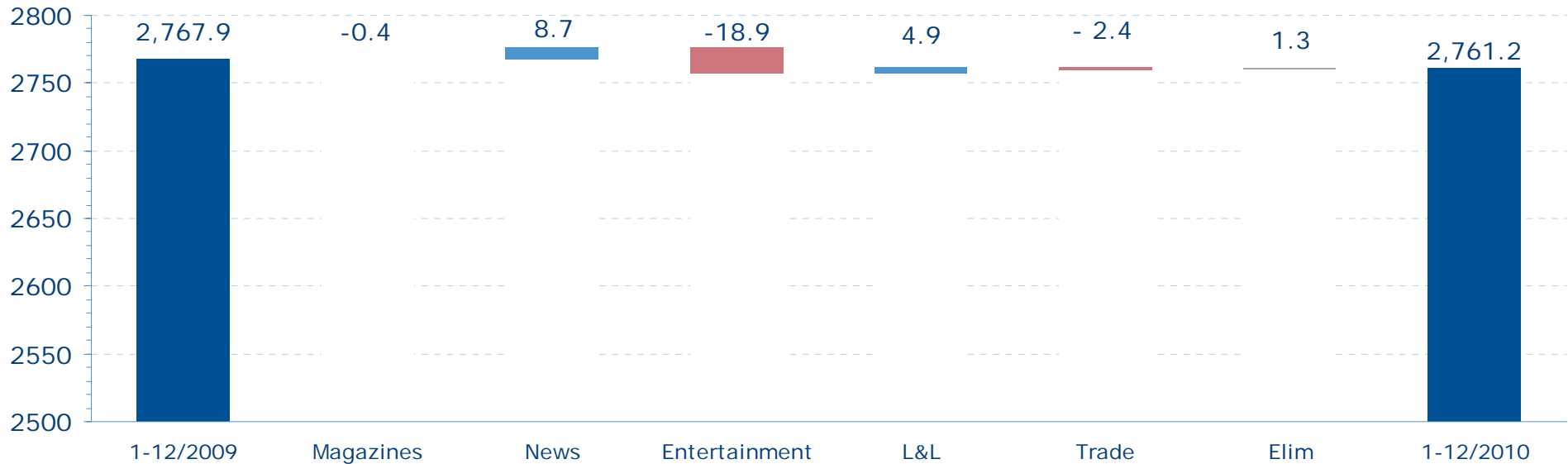
EBIT excluding non-recurring items



Net sales

Divestment of Welho decreased sales in 2010

EUR million



- Magazines: Structural changes in Belgium.
- News: Good sales development, both in print and in digital.
- Entertainment: Divestment of Welho. Excellent performance of broadcasting operations.
- Learning & Literature: Good performance of learning business.
- Trade: Sales mix and lower customer volumes of the Finnish kiosk business and poor economic situation in the Baltic countries.

Paper and personnel costs down - Advertising, ICT and depreciation up

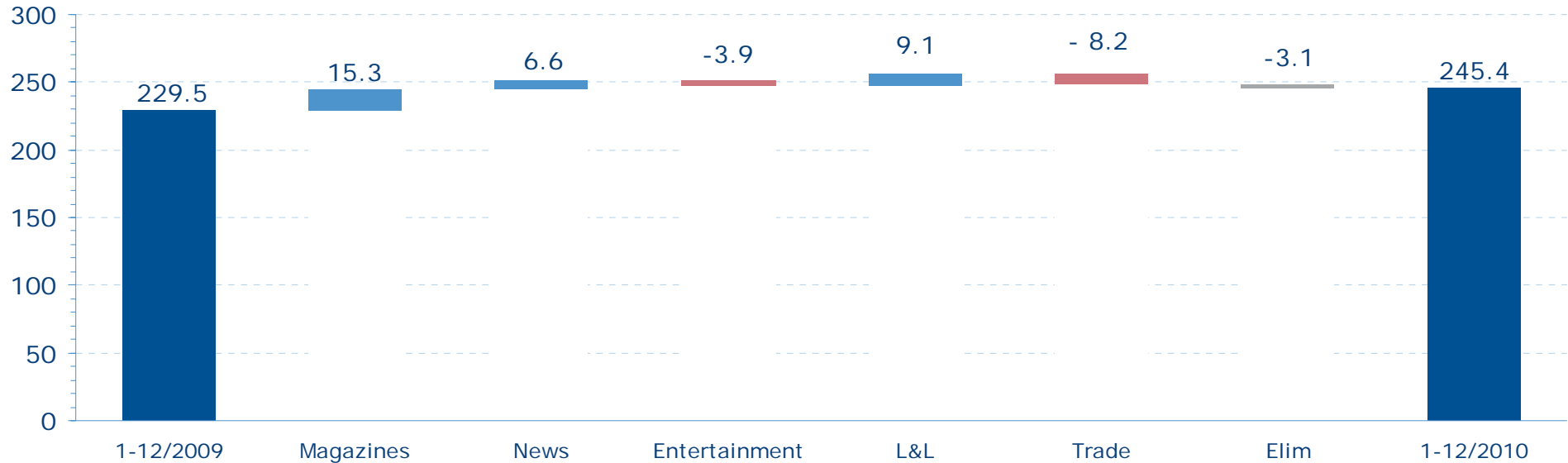
Sanoma Group

EUR million	1-12/2010	1-12/2009	Ch	Ch %*
Materials and services				
Paper costs	115.0	133.6	-18.6	-13.9
Other	1,092.3	1,104.9	-12.5	-1.1
Employee benefit expenses	668.6	695.5	-26.8	-3.9
Other operating expenses				
Advertising and marketing	170.3	157.7	12.5	8.0
Office and ICT expenses	90.0	83.8	6.2	7.4
Other	293.9	294.6	-0.7	-0.2
Depreciation, amortisation and impairment losses	197.1	167.0	30.1	18.1
Total	2,627.3	2,637.1	-9.8	-0.4
EBIT	392.7	195.4	197.3	101.0
EBIT excluding non-recurring items	245.4	229.5	15.9	6.9

EBIT excl. non-recurring items

Good performance on a wide front in 2010

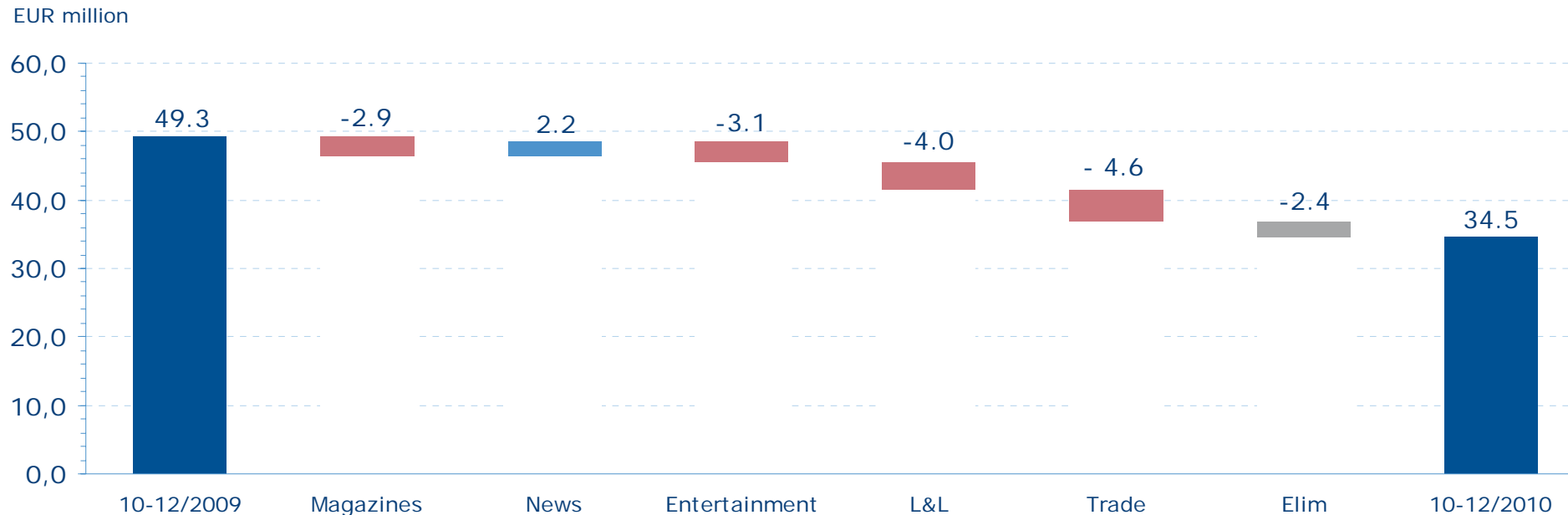
EUR million



- Magazines: Improved advertising sales, lower paper costs and employee benefit expenses.
- News: Improved advertising sales and lower paper costs. Burdened by the effects of the holiday pay.
- Entertainment: Divestment of Welho. Excellent performance of broadcasting operations.
- Learning & Literature: Good performance in learning and efficiency improvements.
- Trade: Sales mix and lower customer volumes of the Finnish kiosk business and poor economic situation in the Baltic countries.

EBIT excl. non-recurring items

News excelled in Q4



- Magazines: Structural changes in Belgium, increased marketing activities in the Netherlands.
- News: Efficiency improvements and good sales development, both in print and in digital.
- Entertainment: Divestment of Welho. Excellent performance of broadcasting operations.
- Learning & Literature: Increased cost of sales and depreciations.
- Trade: Sales mix and lower customer volumes of the Finnish kiosk business and poor economic situation in the Baltic countries.

Divestment of Welho - the main non-recurring item in 2010

EUR million	2010	2009
Magazines	-8.0	-17.1
News	8.9	-8.4
Entertainment	179.0	0.0
Learning & Literature	-5.5	-5.0
Trade	-32.5	-3.6
Sanoma Corporation	5.4	0.0
Sanoma Group total	147.3	-34.1
Associated companies	-22.1	

Non-recurring items in 2010

- Magazines: Sales gain from the Humo magazine, impairment of intangible assets in Sanoma Magazines Netherlands and Sanoma Magazines international as well as restructuring expenses in Sanoma Magazines Netherlands.
- News: Sales gains from Lehtikuva and Sanoma Lehtimedia's local papers.
- Entertainment: Sales gain from the cable TV operator Welho.
- Learning & Literature: Loss on the sale of Bertmark Norge, restructuring expenses and an impairment in the Netherlands.
- Trade: Impairment of goodwill in the Dutch press distribution and loss on sale of Russian operations.
- Sanoma Corporation: Sales gain from real estates.
- Associated companies: Impairment of the Hansaprint asset.

Cash flow from operations improved clearly in 2010

EUR million	1–12/2010	1–12/2009
EBITDA	589.8	362.4
Adjustments		
Gains/losses on sales of non-current assets	-195.2	-2.4
Film and broadcasting rights + prepublication costs	-58.5	-60.1
Other	3.5	3.7
Change in working capital	5.2	16.1
Interest paid	-13.7	-34.6
Other financial items	-3.2	-2.0
Taxes paid	-53.9	-41.4
Cash flow from operations	273.8	241.8

Solid financial situation, strong cash flow and favourable long-term credit facilities

Ready for acquisitions and executing our portfolio strategy

EUR million	31.12.2010	31.12.2009
Balance sheet total	3,203.0	3,106.3
Equity ratio, %	45.6	41.4
Net gearing, %	63.8	79.4
Interest-bearing liabilities	941.9	1,017.7
Interest-bearing net debt	877.9	958.1
Cash and cash equivalents	64.0	59.7



- Net debt/EBITDA 1.5



Appendix 2

Four divisions operating in different fields of media

Successful Integration

Steps to a leading media company

- 1999:** Sanoma and WSOY merged and listed on the Helsinki Stock Exchange
- 2001:** CIG acquisition
Magazine division with operations in 9 countries
- 2003:** Rautakirja merged into Sanoma
- 2004:** Malmberg and Van In acquisition
Leading educational publishers in the Netherlands and Belgium
- 2005:** Independent Media acquisition
Leading magazine publisher in Russia
- 2010:** Acquisition of a 21% share of DNA
Finnish telecommunications company



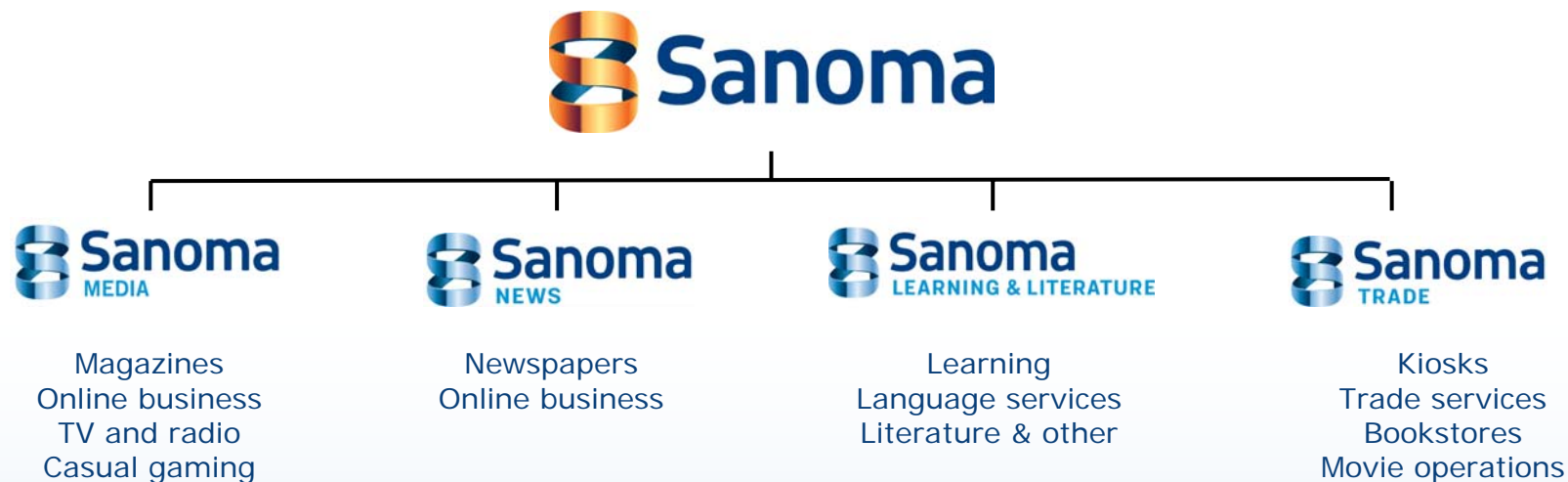
Market leader in most of the operating countries



In addition, Esmerk operates in Finland, UK, Sweden, Germany, France, Russia and Malaysia. AAC operates in Finland, Sweden, Denmark, Norway, UK, Russia and China.

Balanced portfolio

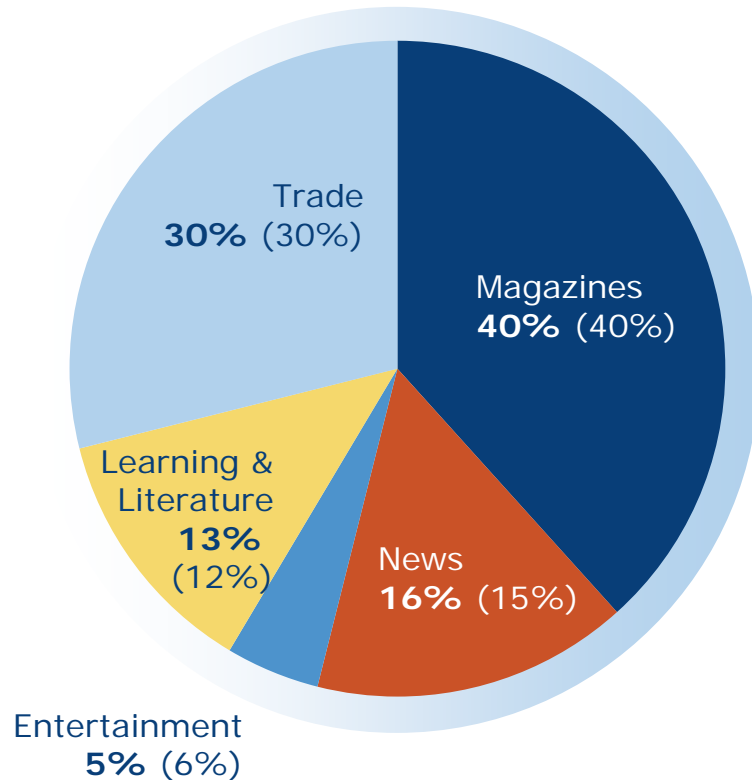
Net sales EUR 2,761 million • EBIT EUR 245 million* • Personnel 15,405**



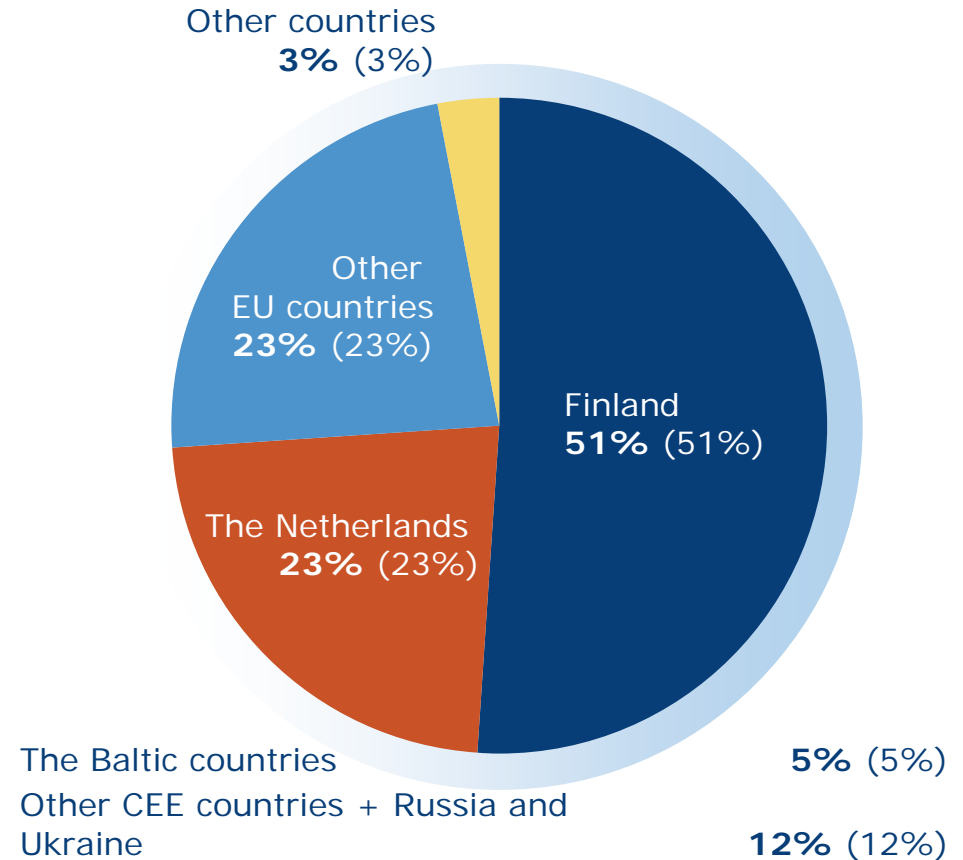
No changes in the revenue split

1–12/2010 (1–12/2009)

By division



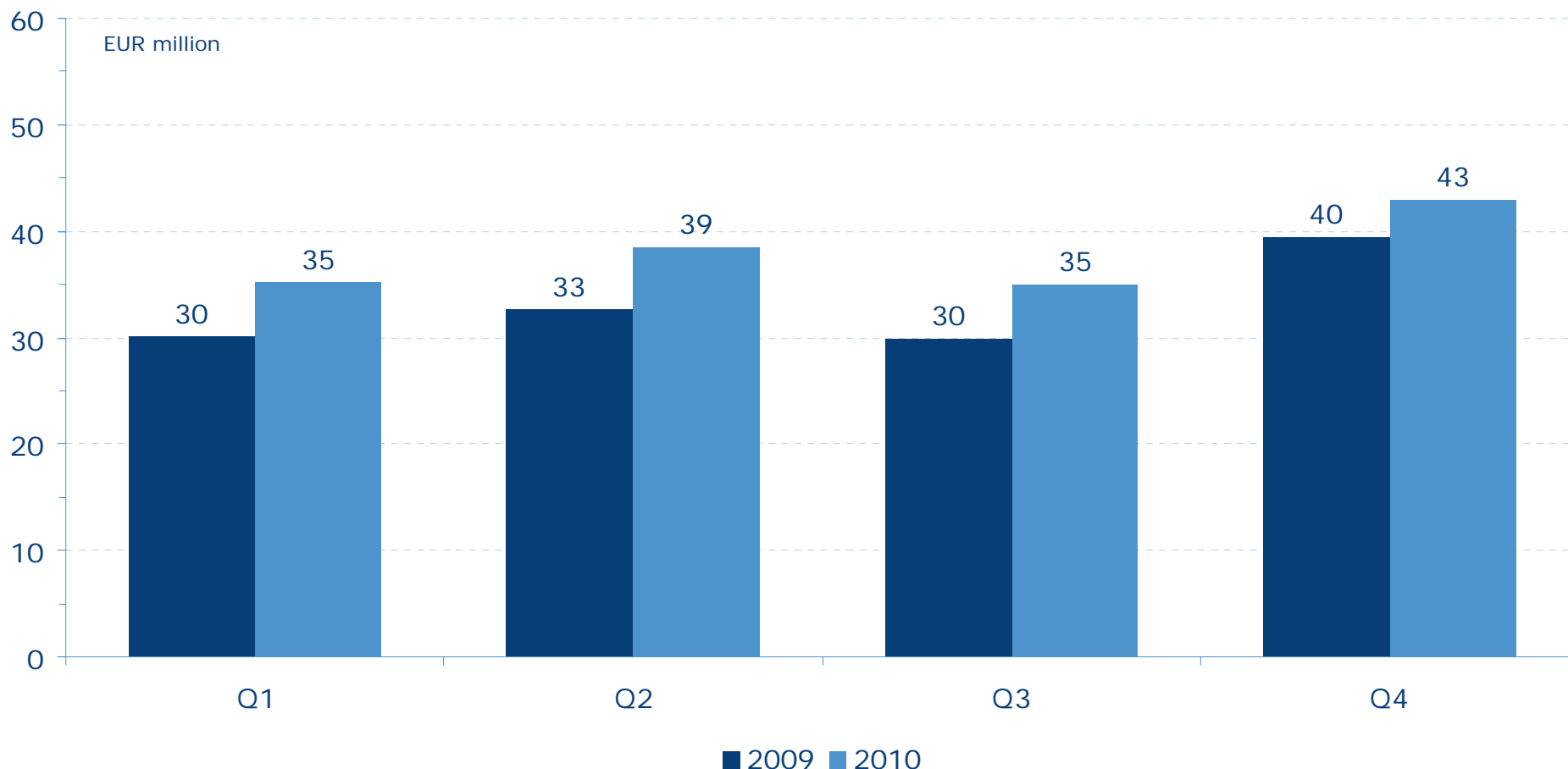
By geographic area



Net sales EUR 2,761.2 million

Consumer online sales up by 14% in 2010

Target to reach annual revenues of EUR 240 million by 2012



Sanoma Media

Leading in selected European media markets

- One of Europe's leading magazine publishers
- Publishes some 300 magazines and a multitude of websites and applications in 12 countries
- Responsible for Sanoma's TV and radio operations
 - The commercial television channel Nelonen
 - 5 other TV channels and 2 radio channels
- Strong brand developer:
 - NL: Libelle, Margriet; FI: Kodin Kuvalehti, ET, Me Naiset; BE: Humo, Libelle; Sensa (6 countries); Story (10 countries)
- Preferred license partner:
 - Cosmopolitan (9 countries), Elle (4 countries), Donald Duck (2 countries), National Geographic (6 countries)...
- Increasing digital operations (Sanoma Digital the Netherlands, Sanoma Budapest, Sanoma Games)
 - Search engines, web portals, virtual communities, news services...



Sanoma Magazines

Key figures

EUR million	10–12/ 2010	10–12/ 2009	Ch %	1–12/ 2010	1–12/ 2009
Net sales	306.0	307.1	-0.4	1,110.9	1,111.2
Sanoma Magazines Netherlands	136.1	138.6	-1.8	490.4	493.2
Sanoma Magazines International	60.9	58.5	4.2	214.9	211.3
Sanoma Magazines Belgium	53.8	57.5	-6.5	208.3	212.3
Sanoma Magazines Finland	56.2	53.5	5.0	201.4	198.8
Eliminations	-1.0	-1.0	-2.3	-4.2	-4.3
EBIT excluding non-recurring items	35.5	38.4	-7.6	128.6	113.4
% of net sales	11.6	12.5		11.6	10.2
Number of employees (FTE)*	4,980	5,191	-4.1		

Sanoma Entertainment

Key figures

EUR million	10–12/ 2010	10–12/ 2009	Ch %	1–12/ 2010	1–12/ 2009
Net sales	31.3	41.1	-23.9	138.2	157.1
EBIT excluding non-recurring items	0.8	3.9	-80.2	16.8	20.7
% of net sales	2.5	9.5		12.1	13.2
Number of employees (FTE)*	218	458	-52.4		

Outlook for 2011

Sanoma Media's net sales are expected to be at the previous year's level and operating profit excluding non-recurring items is estimated to decrease clearly due to the divestments made in 2010. The effects of the Aldipress transfer to Sanoma Media have been included both for the current and comparable year.

Sanoma Media

Key themes

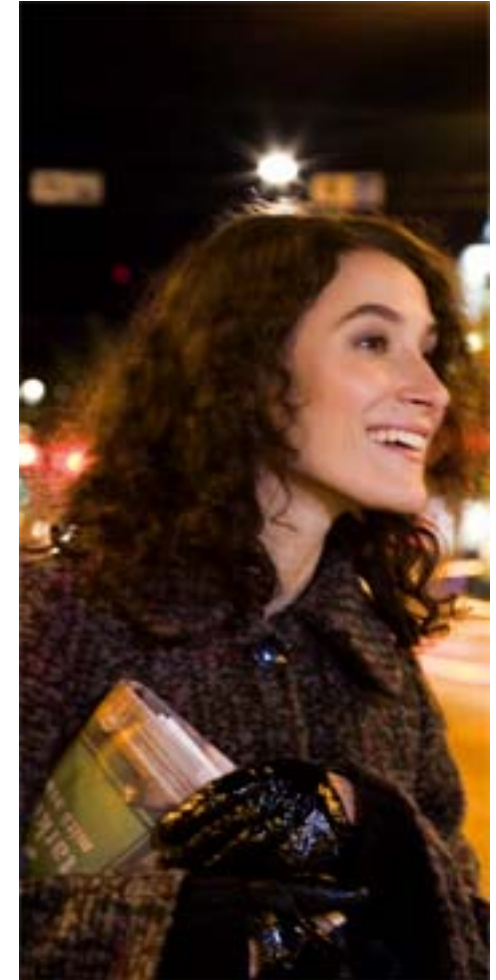
- Combining the power of hundreds of magazines, online and mobile media, and radio and TV channels to create social and economic value for consumers and advertisers
- Leverage its television know-how and assets in Finland also internationally, as well as further strengthen Sanoma Magazines' market positions in Europe.
- Care for core
 - Focus on key magazine brands to safeguard market positions and profitability
 - Growth from adjacent operations (e.g. online, custom publishing)



Sanoma News

Finland's leading newspaper publisher

- Sanoma publishes 4 out of 5 Finland's most read newspapers and free sheets
 - The largest morning paper in the Nordic region and the leading ad medium in Finland (Helsingin Sanomat)
 - The leading tabloid in Finland (Ilta-Sanomat)
 - Finland's two most read free sheets (Metro and Kaupunkilehti Vartti)
- Leading online services
 - The leading service entity for classified advertisements (Oikotie.fi, Keltainenporssi.fi, Huuto.Net)
 - Among the largest online services in Finland by the number of visitors (Iltasanomat.fi, HS.fi)
 - Strong financial site (Taloussanomat.fi)



Sanoma News

Key figures

EUR million	10–12/ 2010	10–12/ 2009	Ch %	1–12/ 2010	1–12/ 2009
Net sales	114.9	112.9	1.8	437.6	428.9
Helsingin Sanomat	64.1	61.1	4.9	235.4	228.4
Iltä-Sanomat	21.6	20.3	6.6	83.3	78.2
Other publishing	25.0	26.9	-7.2	99.5	103.8
Other businesses	33.4	36.6	-8.8	132.9	143.7
Eliminations	-29.2	-32.0	8.8	-113.5	-125.2
EBIT excluding non-recurring items	13.0	10.8	20.5	47.2	40.6
% of net sales	11.3	9.6		10.8	9.5
Number of employees (FTE)*	2,016	2,306	-12.6		

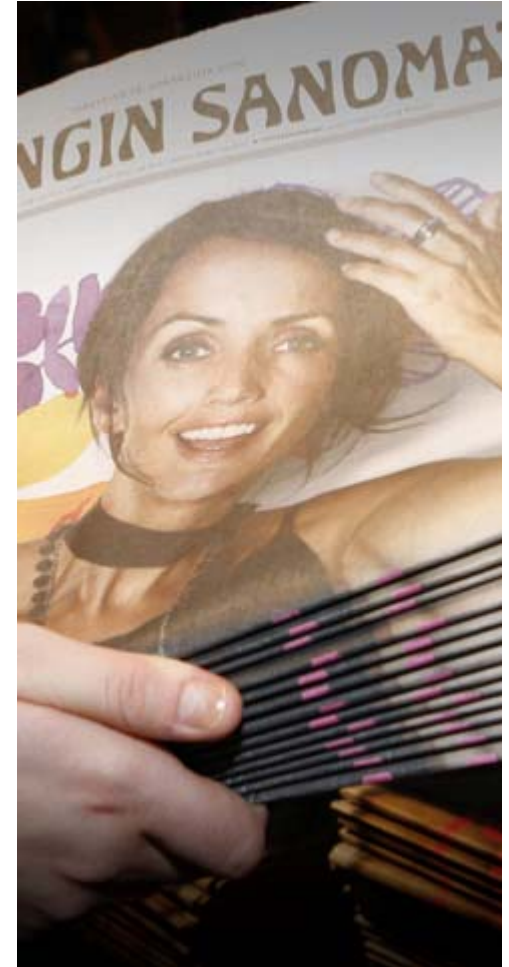
Outlook for 2011

Net sales and operating profit excluding non-recurring items are estimated to be at the previous year's level due to the divestments made in 2010.

Sanoma News

Key themes

- Transformation in media sales
 - From print media sales to cross-media sales; one-stop-shop for advertising customers
 - Creating online self-service channels for customers
- Transformation in consumer sales
 - New hybrid products bring revenues from online (SALS subscription service enabling these)
 - Improved customer knowledge (identification of relevant target groups)
- Transformation of the newsrooms
 - Multi-channel news publishing, UGC....
- Continuous product and service development



Sanoma Learning & Literature

Provider of learning materials and solutions, Finland's leading book publisher

- One of Europe's largest educational publishers
 - Leading positions in its present operating countries – Finland, the Netherlands, Belgium, Poland and Hungary
 - Optimizing the use of ICT to ensure growth
 - Taking advantage of curriculum changes and educational reforms
 - Expanding product portfolio with edutainment business
- Increasing offering of business information and services including language training and services
- The market leader in general literature in Finland



Sanoma Learning & Literature

Key figures

EUR million	10-12/ 2010	10-12/ 2009	Ch %	1-12/ 2010	1-12/ 2009
Net sales	65.1	64.7	0.6	350.1	345.1
Learning	33.7	32.7	3.2	249.3	239.1
Language services	8.9	6.3	40.7	27.1	27.5
Literature and other businesses	24.8	28.0	-11.5	83.6	88.9
Eliminations	-2.2	-2.3	1.6	-9.9	-10.4
EBIT excluding non-recurring items	-14.4	-10.4	-38.2	52.6	43.5
% of net sales	-22.0	-16.1		15.0	12.6
Number of employees (FTE)*	2,656	2,745	-3.3		

Outlook for 2011

Net sales are estimated to increase slightly and operating profit excluding non-recurring items is expected to be at the previous year's level.

Sanoma Learning & Literature

Key themes

- From educational books to blended learning solutions
 - Individual and flexible learning, aided by use of technology
 - Offering different routes of learning, guided by digital testing
- Customised solutions for multilingual communications
 - Content creation, translation & localisation, competence development
- Improving efficiency
 - Restructuring in literature operations, in multivolume business in particular
 - Divesting non-core activities (Studiebeurs, educational magazines...)



Sanoma Trade

Market leading press distributor in Finland, the Netherlands, and the Baltic Countries

- The leading kiosk operator in Finland and the Baltic countries
 - With its more than 700 kiosks, R-kioski is one of Finland's most visited retail chains (around 120 million visits annually)
- The leading press distributor in Finland, the Netherlands, and the Baltic countries
- The leading bookstore chain in Finland and Estonia
- The leading movie theatre chain in Finland and the Baltic countries



Sanoma Trade

Key figures

EUR million	10–12/ 2010	10–12/ 2009	Ch %	1–12/ 2010	1–12/ 2009
Net sales	226.1	235.3	-3.9	825.4	827.8
Kiosk operations	102.4	110.5	-7.4	398.4	404.2
Trade services	60.1	60.6	-0.9	230.4	227.9
Bookstores	43.2	44.5	-3.1	120.6	123.3
Movie operations	23.9	23.6	1.4	90.0	88.0
Eliminations	-3.5	-4.0	14.3	-14.0	-15.6
EBIT excluding non-recurring items	5.6	10.3	-45.1	19.4	27.6
% of net sales	2.5	4.4		2.4	3.3
Number of employees (FTE)*	5,370	5,943	-9.7		

Outlook for 2011

Net sales are estimated to grow slightly and operating profit excluding non-recurring items is estimated to improve clearly. The effects of the Aldipress transfer to Sanoma Media have been included both for the current and comparable year.

Sanoma Trade

Key themes

- Concept development
 - New store concepts for R-kioski and bookstore chain Suomalainen Kirjakauppa
 - Increasing alternative content offering in movie theatres
 - From press distribution to trade services: in-store merchandising, marketing logistics..
- Retail is detail – costs in constant focus:
 - Closing down unprofitable units
 - Restructuring the Estonian operations to improve competitive advantage and increase co-operation in marketing and business development





Appendix 3

About owners and coverage

Largest shareholders

31 January 2011

% of shares and votes

Aatos Erkko (of which through Oy Asipex Ab: 7.25%)	23.02
Robin Langenskiöld	7.54
Rafaela Seppälä	7.17
Antti Herlin (Holding Manutas Oy: 3.27%, Security Trading 0.51%)	3.79
Helsingin Sanomat Foundation	3.50
Ilmarinen Mutual Pension Insurance Company	2.12
Alfred Kordelin Foundation	2.04
Varma Mutual Insurance Company	1.55
Foundation for Actors' Old-age-home	1.38
Svenska litteratursällskapet I Finland r.f.	1.35

Foreign ownership in total **10.2**

Total number of shares **162,810,593**

Total number of shareholders **23,644**

Institutional investors: 54% of shares

Private investors: 46% of shares

Analyst coverage

Carnegie Investment Bank

Ilkka Haavisto
tel. +358 9 6187 1235
Carnegie.fi

Crédit Agricole Cheuvreux Nordic

Niklas Kristoffersson
tel. +46 8 723 5100
Cheuvreux.se

Danske Markets Equities

Panu Laitinmäki
tel. +358 10 236 4867
Danskeequities.com

Deutsche Bank

Mark Braley
tel. +44 207 545 9904
Db.com

Evli Bank

Markku Järvinen
tel. +358 9 4766 9635
Evli.com

Exane BNP Paribas

Andrea Beneventi
tel. +44 20 7039 9509
Exane.com

E. Öhman J:or Securities Finland

Teemu Vainio
tel. +358 9 8866 6038
Ohman.se

FIM

Mark Mattila
tel. +358 9 6134 6398
Fim.com

Handelsbanken Capital Markets

Mikael Doepel
tel. +358 10 444 2450
Handelsbanken.com/capitalmarkets

Nordea

Sami Sarkamies
tel. +358 9 165 59928
Nordea.com/markets

Pohjola

Kimmo Stenvall
tel. +358 10 252 4561
Opstock.fi

SEB Enskilda

Mika Koskinen
tel. +358 9 6162 8718
Jutta Rahikainen
tel. +358 9 6162 8713
Enskilda.fi

Swedbank Markets

Bengt Dahlström
tel. +358 20 746 9155
Swedbank.fi

Sanoma's IR team

Mr Kare Laukkanen

tel. +358 105 19 5064

kare.laukkanen(at)sanoma.com

Ms Anna Tuominen

tel. +358 105 19 5066

anna.tuominen(at)sanoma.com

Ms Katariina Hed

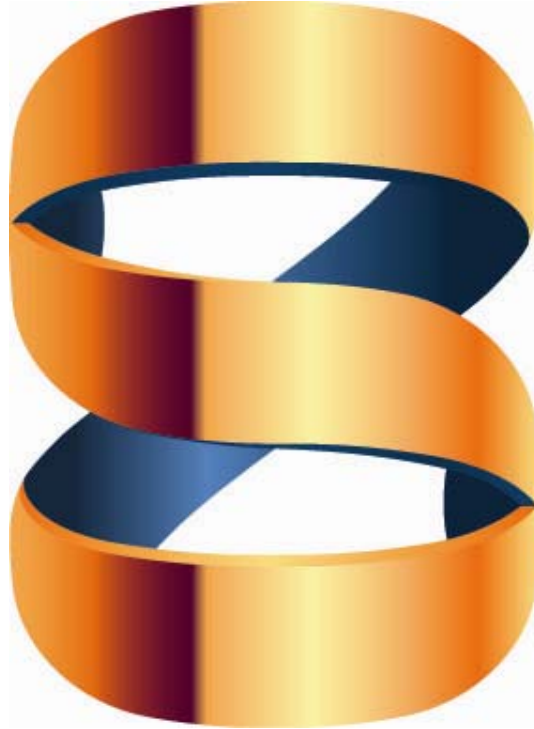
tel. +358 105 19 5062

katariina.hed(at)sanoma.com

IR team's joint email address:

ir(at)sanoma.com





Inspires, Informs and Connects